

## APP Instruction Manual

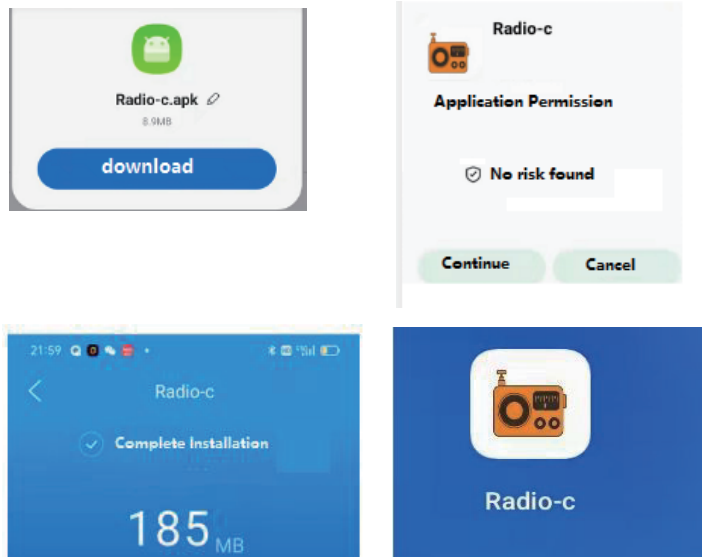
### ( Radio-c )

#### Attachment 1: Instructions for APP Installation

- Step 1: turn on the radio RF75A
- Step 2: download the APP  
Android System: Use your mobile browser to scan the following QR code  
iOS System: Go to "App Store" and search "Radio-c" to download the App

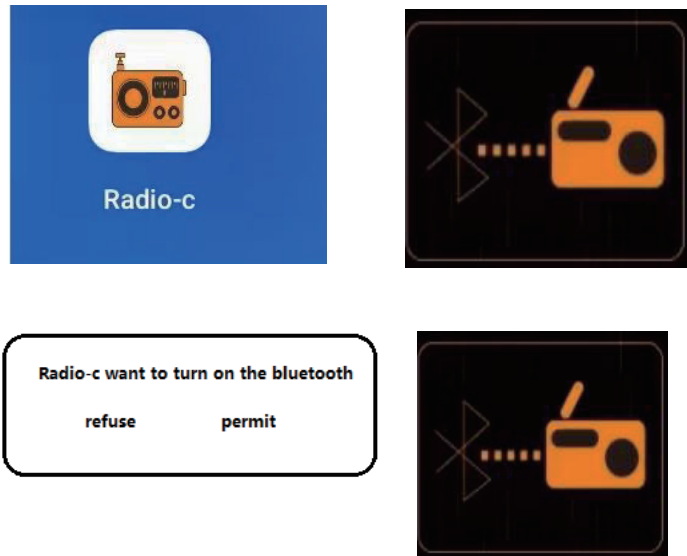


- 2.1: Click “download”→Click “continue”→Installation finished, click “open the app”→APP icon is displayed



1

- 2.2: Click the APP icon to enter and use→Click the Bluetooth symbol the bottom right on the APP→Click “permit”→ Click the symbol again  
→ Choose “ RF75A-BLE ”→“Successful connection”

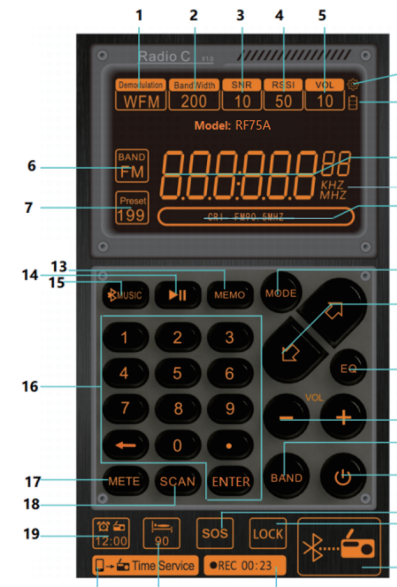


2



3

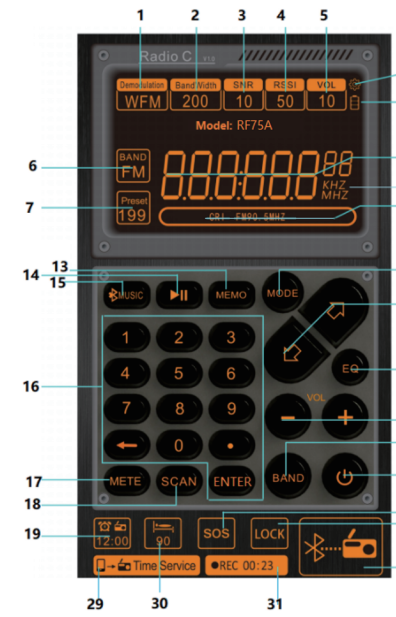
#### Attachment 2: Description of Symbols on APP Interface



4

No.	Symbols	Functions
1		Demodulation mode symbol
2		Bandwidth
3		Signal-to-noise ratio
4		Signal intensity
5		Volume symbol
6		Click to select the FM, AM, SW, VHF
7		7-1: “Present” display: meaning recall station: Press digital buttons to select the memory station of number and then press “Enter” to confirm 7-2: “Present” flashing: mean manual station storage: find the target frequency points, long press [MEMO], “Present” symbol is flashing, then press the [↔] to select station storage address number, press [MEMO] key to confirm. 7-3: “Present-” symbol: There are no stored stations
8		View the device version
9		Battery symbol
10		Radio Frequency display
11		Unit display
12		Edit the name of the frequency station: Long press this location and enter the current frequency according to the language prompt
13		13-1: press: enter recall station mode: press [↔] button select station. 13-2: long press: manual station storage: find the target frequency points, long press [MEMO] key, “Present” symbol is flashing, press the [↔] to select station storage address number, press [MEMO] key to confirm.
14		Play&pause
15		Switch between TF card play mode and Bluetooth play mode Note: If you need to play music in Bluetooth mode, please open the mobile phone Bluetooth connection, select “RF75A” in the search list, you can play after successful connection.

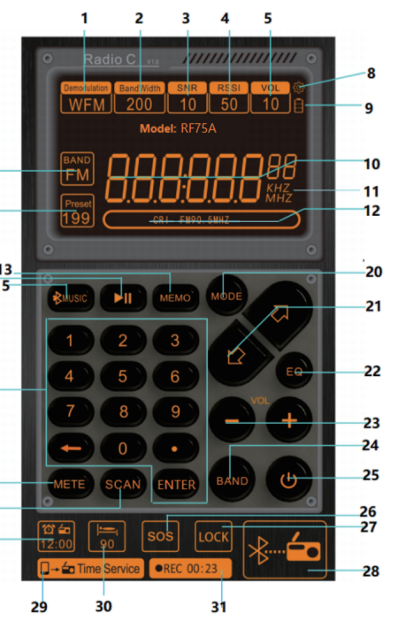
5



6

No.	Symbols	Functions
16		16-1: Digital key dot frequency: press [ENTER] key, press digital buttons which your target frequency point, press [ENTER] key for confirm. 16-2: Recall station: press digital buttons you need, press [ENTER] key for confirm. 16-3: Frequency: press digital buttons which your need, press [ENTER] key for confirm.
17		In SW mode, select meter wave
18		18-1: In reception mode, long press to search the channels stored automatically 18-2: In WB band, long press to enter alarm mode, long press again to exit
19		Set/close the clock
20		In TF play mode, choose the play mode sequence: repeat all & repeat one & repeat file & random
21		±/- (adjust the frequency/choose a song/take a channel/choose an address of storing channels)
22		EQ for play mode: E1: NORMAL E2: POP E3: ROCK E4: JAZZ E5: CLASSIC E6: COUNTR
23		Volume ±/-
24		Band switching
25		25-1: Power on/Power off 25-2: Disconnect APP connection: after pressing “off” on APP interface, the radio displays time state, long press [OFF] on the right of radio) The radio displays “BLE OFF”, it means APP is disconnected forcibly
26		26-1: Long press to turn on /turn off SOS alarm 26-2: Press to turn on /turn off the light
27		Long press to lock, long press again to unlock

7



8

No.	Symbols	Functions
28		Connect the mobile APP to the radio
29		Equipment calibration time
30		Set your Sleep Time
31		Record in Radio reception mode Note: insert TF card into the radio before recording press to enter the recording mode press again to exit

#### Attachment 3: Working Modes on APP Interface



- Instruction 1: in play music mode, directly click the symbol on interface to choose an EQ sound effect NORMAL POP ROCK JAZZ CLASSIC COUNTRY.
- Instruction 2: in TF play mode, click TF card play order to choose:
- (Repeat all, the radio displays: rA)
  - (Repeat one, the radio displays: rO)
  - (Repeat the songs in current folder, the radio displays: rF)
  - (Random play, the radio displays: rR)

9